

Cyclops96

Stand-alone microplate reader for Immuno-hematology



Main features

High resolution microplate image capturing and storage in archive repository

Automatic result interpretation for standard and proprietary reactions type

Safe processing using on-board barcode reader

Communication with external instrument or host-PC

Suitable for ABO/Rh Grouping, Antibody screening, Phenotyping and Cross-match testing

Local worklist implementation and processing

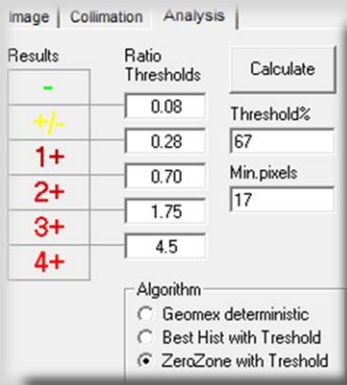
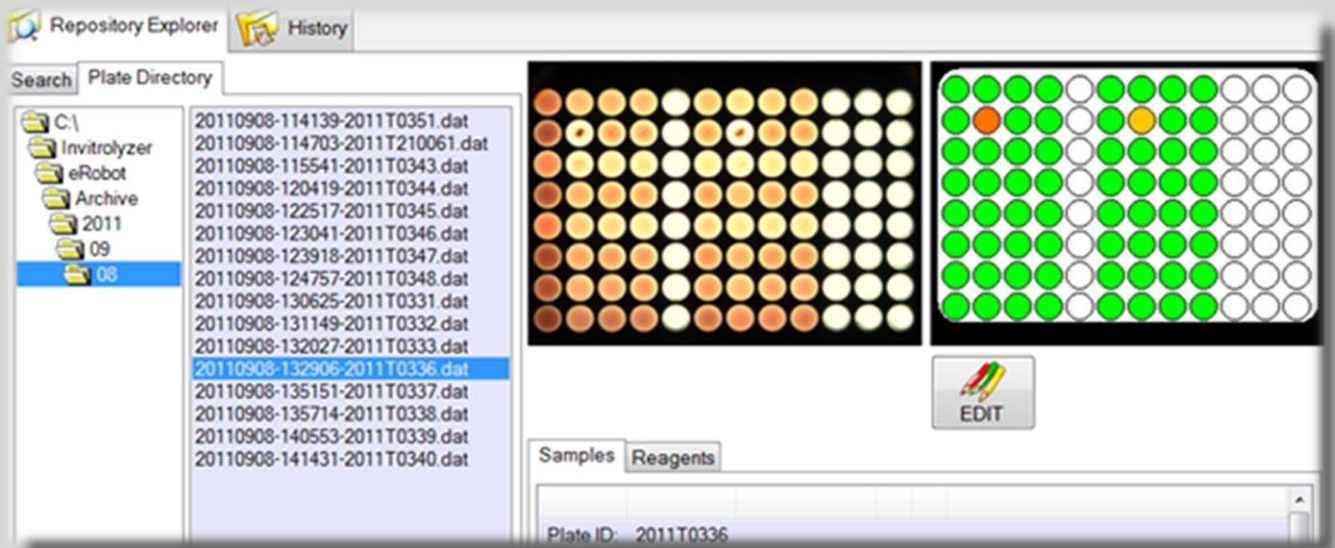
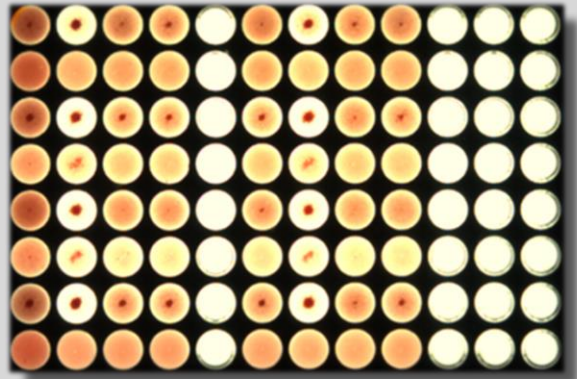


High resolution

A sophisticated “telecentric“ optical lens connected to a high resolution CCD camera (1 or 5 Mpixels) allows the capturing of the microplate picture in single file, in compressed format.

Pictures repository

The reactions are automatically evaluated after the picture capturing and stored with the results interpretation in the archive repository.



Flexible Interpretation

The result interpretation is based on a flexible algorithm whose parameters can be adapted to different type of agglutination reaction.

Dedicated interpretation settings can be assigned specifically to each test type, depending on the sensitivity of the reagents and related reaction scores.

Safety

The on-board barcode scanner allows a safe testing, alerting the user when the microplate code mismatches with the worklist in process.

Local worklist or automated processing

The enhanced user interface allows to implement local worklist for manual processing or working through the connection with external sampler or automatic pipettors (different drivers available or customizable).

BarCode	Name	1_Method	2_Method	3_Method	3_Method_DAT	4_Method	5_Method
60138978	patient name 1	Booked		Booked			Booked
60138979	patient name 2	Booked		Booked			
60138980	patient name 3						Booked
00110152	patient name 4	Booked		Booked			
00110153	patient name 5						Booked
00001101	patient name 6						
00001102	patient name 7						

User Name: gsg
Password: *****
 Change Password
OK
Cancel

Protected Data

The access to the application interface (login) is protected by user ID and Password. Different users and privileges can be defined by the GSG LogInManager program.

Validation and reporting

The result elaboration can be confirmed or modified by a validation process before to generate the reporting or send the result to an external host-PC.

The result printout is available in different format customizable by Crystal Report software. Reporting can be also saved as a file in the most common file format (PDF, XLS, DOC etc.).

Method: 04-A-B-AB-D1-D2-Ctrl
Date: giovedì 22 settembre 2011
Run: 20110922-112209
UserName:

1 - IDX001 - SampleID: 100001 - Sample Result: A D1+ D2 +
Gelcard exp. Date: 2012-11-04 Lot: 70611 Number: 35640
A B AB D1 D2 Ctrl
4+ - 4+ 4+ 4+ -

5 - IDX005 - SampleID: 100007 - Sample Result: O D1+ D2 +
Gelcard exp. Date: 2012-11-04 Lot: 70611 Number: 35698
A B AB D1 D2 Ctrl
- - - 4+ 4+ -

7 - IDX007 - SampleID: 100009 - Sample Result: A D1+ D2 +
Gelcard exp. Date: 2012-11-04 Lot: 70611 Number: 35702
A B AB D1 D2 Ctrl
4+ - 4+ 4+ 4+ -

Current Page No.: 2 Total Page No.: 2 Zoom Factor: 100%

Technical specifications

Resolution and Optics	1 or 5 Megapixel CCD camera connected to a “telecentric” optic
Connection to PC	Via 2 USB plugs (CCD camera and BC scanner)
Weight and dimension (mm)	7kg – 250 (width)/410 (depth)/210 (height)
Power	Voltage: 110 / 220 / 240 Volts AC Frequency: 50 / 60 Hz
Computer requirements	Dual core i5/i7 or higher – 2 USB port min Windows XP or Windows 7 operating system

a new experience in lab automation



GSG Robotix Srl
Via G. Matteotti, 66
Cinisello Balsamo (MI)
20092 – Italy
Tel. 0039 02 6128842
Fax 0039 02 6178583
www.gsgrobotix.com